

Your Complete Industrial Vacuum Source

• PORTABLE

• STATIONARY

• TRAILER

• CENTRAL DUCTED



For more info call
1300 333 ACS

Exclusive Features & Key Benefits On Our Portable Series

Multi-Vac vacuums are engineered to provide long service life with minimal maintenance attention! Consider these important factors:

With Multi-Vac units, the dust collector bottom is open to the hopper with no internal baffles or ledges to create bridging and retard the flow of collected material into the hopper. In addition, this greatly reduces the cross contamination when handling different products.

Multi-Vac is fitted with a positive displacement vacuum pump. As suction increases with increased material flow, Multi-Vac develops only the power required to move the material. The maximum vacuum generated is 16" hg. This is enough to flow material yet remains within the specifications of the vacuum pump manufacturers.

By using conservative design standards with all our components we have produced a machine which will have a superior operating life span and require minimum maintenance.

Multi-Vac is made completely in our plant in the U.S.A. This allows us greater quality control. In addition, when custom specifications are needed, we are here to work with you.



DUAL INLETS™
Each Multi-Vac comes standard with Dual Inlets. This feature allows for more flexible machine placement and the added convenience of allowing left or right hand pick-up.



NO TOOLS REQUIRED™ FILTER/CAGE REMOVAL
When service is required, our **No Tools Required** system provides immediate access to and immediate removal and replacement of filters and cages. These features can save hours over some older designs.

No matter the need, you are sure to find a Multi-Vac that is perfect for your application



Super Mini Series



Super Mini Series Model FLTP



Mini Series



Millennium Series

Your Extreme Duty Industrial Vacuum Supplier



Multi-Vac Bag Filters/cages

Multi-Vac Bag Filters have been proven on the widest range of materials from abrasive to high temperature and offer fast replacement. Bag Filters have no pleats to plug or bridge over which is a common problem with more costly cartridges.



Reverse Pulse Jet Filter Cleaning

Multi-Vac is equipped with an "on demand" programmable reverse pulse jet filter cleaning system for continuous operation. Multi-Vac also has a manual push-button system for offline filter cleaning.



Guard Cam-Roll™ Air Lift System

Hopper changing is quick and easy using our Guarded Cam-Roll Air Lift System. The ease of hopper removal keeps downtime to a minimum.



Built In Level Probe

A built in level probe shuts the unit down whenever the hopper is full. A liquid high level probe is also available as an option when working with liquids.



Stationary Systems



Interceptor Hoppers



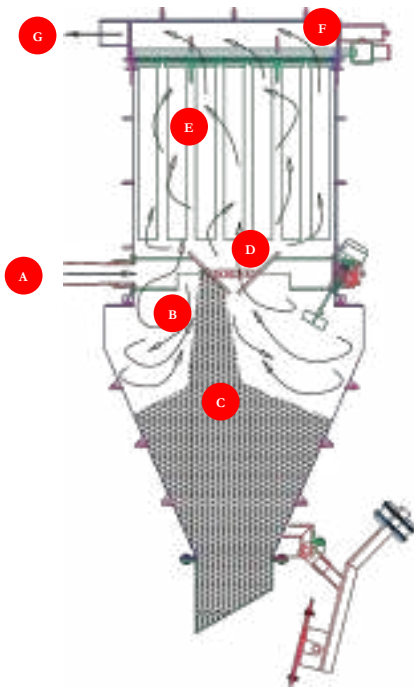
Trailer Units



**Diesel
LPG Gas
Electric**

Your Extreme Duty Industrial Vacuum Experts

How It Works...



A. Material is picked up via a Multi- Vac Air Bleed Nozzle at a nozzle velocity of 4,000 to 7,000 feet per minute based on bulk density of your product.

B. The product impacts the abrasion resistant target deflector.

C. The heavy product drops from the air stream into the vacuum tight collection hopper.

D. Now only dust-laden air travels vertically at a can velocity of approximately 40 to 175 feet per minute. Special attention in this area insures long filter life that will give long vacuum pump life.

E. Air born dust is collected on the outside of the filter media.

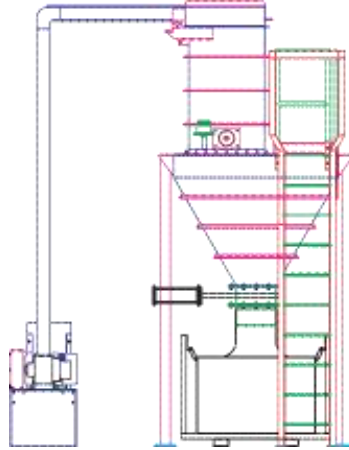
F. The “on demand” programmable reverse pulse jet filter cleaning system ensures continuous operation the machine does not have to be shutdown for filter cleaning.

G. Clean air then passes to the vacuum pump inlet.

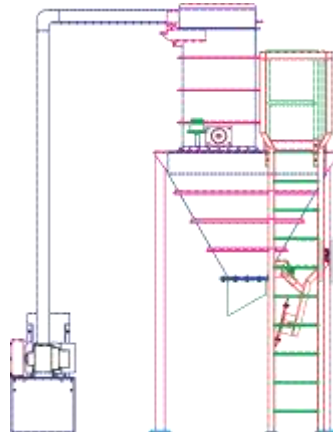
The discharge air then passes through a large silencer located in a modular Power Pack.™

Versatile Use In Multiple Applications

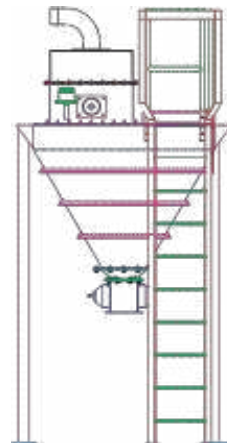
Stationary Vacuum System Discharging Into A Super Sack



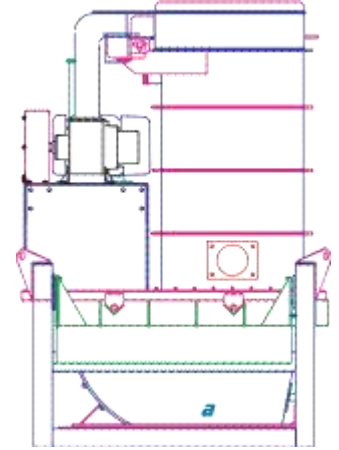
Stationary Unit With Counter Weight Gate For Batching



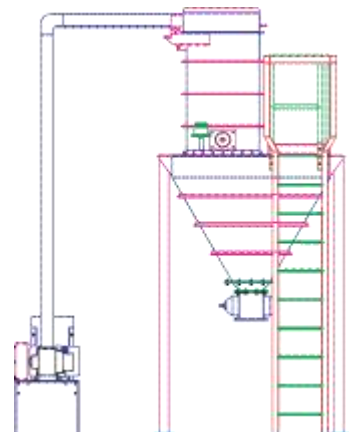
Stationary Intercept Hopper With Rotary Air Lock



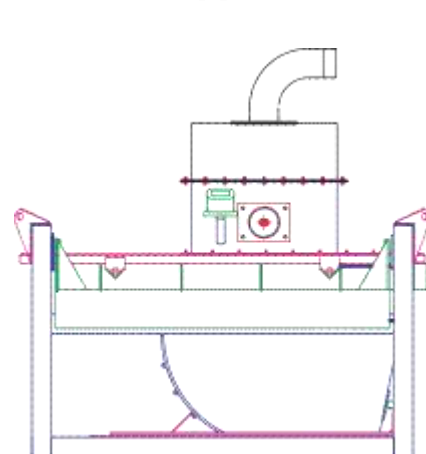
Fork Lift Truck Portable Vacuum Cleaner



Stationary Unit With Rotary Air Lock For Continuous Discharge



Fork Lift Truck Portable Intercept Hopper



Engineering and CAD Capabilities

Multi-Vac's engineering and CAD capabilities are the backbone of our Industrial Vacuum Systems. We offer complete design & engineering services. It our engineering staffs' experience that ensures the industrial vacuum systems we develop are state of the art, cost effective and designed with your specific use in mind. We utilize the latest tools and software including Autodesk, Inventor® 3D CAD and ProNest .



Discharge Valve Options



Air Operated Swing Gate mounted on a Bottom Dump



Rotary Airlock, Side Entry, shown just before mounting



Double Flap Valve mounted on a Bottom Dump Hopper



Orifice Gate shown just before mounting

Counter Weighted Gate

Standard on our Stationary Vacuum Systems allows batch dumping. As hopper fills the high level probe senses a full hopper & turns off vacuum, loss of vacuum & weight of product opens gate, once emptied counterweight closes gate & vacuum can be restarted.

Air Operated Swing Gate

Allows batch dumping on stationary vacuum systems, as hopper fills the high level probe will shut down vacuum. Collected material will not be dumped until an operator moves hand lever valve to open swing gate. Once hopper is emptied, operator moves hand lever valve to close gate, vacuum can be restarted.

Rotary Airlock

Allows continuous dumping on stationary vacuum systems. Material should be rather free flowing & uniform size, so it does not get jammed in the airlock. Maintains a seal on the vacuum side while dumping product on the other side of the airlock.

Orifice Gate Option

Allows batch dumping on Stationary Vacuum Systems, operation similar to our Air Operated Swing Gate, except it does not require the clearance under the hopper that the swing gate requires. Orifice Gate is ideal for batch loading of Super Sack or Drum Adapter.

Double Flat Dump Valve

Uses a double flap operation and a small compartment between flaps for continuous dumping. Used for large particle and abrasive material. Flap on vacuum side opens and drops a quantity of product into compartment while unload flap is closed. Vacuum flap closes, then unload flap opens dumping product into container. Unload flap closes and vacuum flap opens dumping next quantity of product into compartment and it keeps cycling this way for continuous operation.

MULTI-VAC SUPER MINI SERIES



This compact vacuum loader dumps collected material into a tote box, not on the floor as competitive machine do. The Super Mini Series is offered with either positive displacement pump or regenerative vacuum pump.

Standard Features

- 170 Litre dump hopper
- Electric elevation device hopper
- dumps into a 863mm high tote box
- Cartridge filter with reverse pulse
- jet cleaning system
- "No Tools Required" Access
- Hopper full shut down probe
- Flip top cartridge access cover
- Dual Inlets, dual inlet deflectors
- Casters

Optional Features

- Positive Displacement Pump Models
- Regenerative Vacuum Pump Models
- 700L Air Lift and Self Dumping Hopper

Specifications

- 1575mm L, 838mm W, 1626mm H
- Shipping Weight: PD Model 590 Kg
R Model 522 Kg

Electric Power

- All models available 380/3/50



Positive Displacement Pump Models

Model	HP	Air Flow	Hose Size
7.5PD	7.5	180cfm @ 14"hg	2", 2.5", 3"

Regenerative Vacuum Pump Models

Model	HP	Air Flow	Hose Size
8.5R	8.5	155 cfm @ 9.5" hg	2", 2.5", 3"
11.5R	11.5	155 cfm @ 10.5" hg	2", 2.5", 3"

SUPER MINI SERIES FORK LIFT TRUCK PORTABLE



This compact vacuum dumps collected material into a 750 Litre self dumping hopper from disposal with a fork lift truck. High performance to convey the heaviest materials.

Standard Features

- 700 Litre self-dumping hopper
- Cartridge filter with reverse pulse
- jet cleaning system
- "No Tools Required" Access
- Hopper full shut down probe
- Flip top cartridge access cover
- Dual Inlets, dual inlet deflectors

Optional Features

- 750 Litre Air Lift Stand and Self Dumping Hopper

Specifications

- 1168mm L, 990mm W, 1524mm H

Electric Power

- All models available 380/3/50

Positive Displacement Pump Models

Model	HP	Air Flow	Air/Cloth Ratio	Weight
7.5PD	7.5	180cfm @ 14"hg	3.5	544 Kg
10PD	10	270cfm @ 14"hg	3.9	590 Kg

Regenerative Vacuum Pump Models

Model	HP	Air Flow	Air/Cloth Ratio	Weight
8.5R	8.5	155cfm@ 9.5"hg	3.0	522 Kg
10PD	10	155cfm@10.5"hg	3.0	532 Kg

Dimensions

Length	Width	Height
1006mm	876.3	1524mm

MULTI-VAC MINI SERIES



The compact Mini-Series is moveable completely assembled and will fit through an 12" door.

The 750 Litre hopper means less time travelling to dump material and more time working.

Plus any flowable material can be handled.

Standard Features

- 700 Litre hopper
- "No Tools Required" Access
- Positive displacement vacuum pumps are V-belt driven for optimum performance
- Filter bags are reverse pulse jet cleaned on a "on-demand" (programmable) basis
- Hopper full shut down probe
- Flip top filtration access cover
- Dual Inlets, dual inlet deflectors
- Moveable (completely assembled) by a 3000 Kg fork-lift truck
- No internal baffles or ledges to create bridging and retard the flow of collected material
- Fits through an 2.5 metre high door completely assembled

Optional Features

- Cartridge filters
- Explosion proof electrics
- LP Gas or Diesel driven vacuum pumps
- Liquids handling probe
- Trailer mounted units
- Interceptor hoppers
- Power Cord Reel
- HEPA filters
- 1500 Litre hopper

Stationary Verson

The Mini series is also available in a stationary design with a complete range of hopper sizes and discharge configurations.

Dimensions

Length	Width	Height
1680mm	1711.3	2420mm

Multi-Vac Mini Series Models

Model	HP	Air Flow	Air/ Cloth Ratio	Weight
Mini 1500	15	355cfm @ 14"hg	3.2	1815 Kg
Mini 2000	20	440cfm @ 16"hg	4.0	1873 Kg
Mini 2500	25	600cfm @ 16"hg	5.3	1920 Kg
Mini 3000	30	720cfm @ 16"hg	6.5	1950 Kg

MULTI-VAC MILLENNIUM SERIES



The new generation of vacuum loaders engineered to provide long service life with minimal maintenance attention! With a wide range of capacities available, there is a Multi-Vac Millennium to suit your application.

Standard Features

- 1500 Litre hopper
- “No Tools Required” Access
- Positive displacement vacuum pumps are V-belt driven for optimum performance
- Hopper full shut down probe
- Flip top filtration access cover
- Dual Inlets, dual inlet deflectors
- No internal baffles or ledges to create bridging and retard the flow of collected material
- Movable (completely assembled) by a 4000 Kg fork-lift truck
- Filter bags are reverse pulse jet

Optional Features

- Cartridge filters
- Explosion proof electrics
- LP Gas or Diesel driven vacuum pumps
- Liquids handling probe
- Trailer mounted units
- Interceptor hoppers
- HEPA filters

Standard Portable Systems

Vacuum units are supplied with a 1500 Litre fork lift truck type self dumping hopper and a heavy duty air lift stand. A complete range of nozzles, hoses and couplings are available from 2” to 10” in dia.

Dimensions

Length	Width	Height
2153.7mm	1981.2	2978mm

Multi-Vac Millennium Series Models

Model	HP	Air Flow	Air/ Cloth Ratio	Weight
3000	30	720cfm @ 16"hg	2.5	2850 Kg
4000	40	860cfm @ 16"hg	3.0	3039 Kg
5000	50	1250cfm @ 16"hg	4.4	3104 Kg
7500	75	1550cfm @ 16"hg	5.5	3370 Kg

STATIONARY SYSTEMS & INTERCEPTOR HOPPERS



Power Packs™

- 10hp to 75hp
- Ease of service
- Electric, Diesel or LP Gas



A Multi-Vac Stationary System can power a manifold system throughout the entire plant. A Multi-Vac Intercept Hopper can be added to the vacuum line to collect reusable material.

Standard Features

A Multi-Vac Stationary System can be used as a central vacuum cleaning system, batching, continuous discharge, loading or unloading.

- On ground controls for easy access
- 453 Litre to 3823 Litre capacities
- “No tools required” filter/cage removal system
- Dual inlets
- Power a manifold system throughout the plant with multiple hose inlet points.

Interceptor Hoppers

A Multi-Vac Intercept Hopper can be used to reclaim picked-up material. Material drops out of the air-stream into the hopper. The remaining dust & fines continue on and are collected at the main unit.

- Stationary or forklift portable
- Can be installed in many configurations
- Hopper full shut down probe
- Standard and custom units available

Stationary Series Models

Model	HP	Air Flow	Air/ Cloth Ratio
Mini 1000S	10	270cfm @ 14"hg	2.4
Mini 1500S	15	355cfm @ 14"hg	3.1
Mini 2000S	20	440cfm @ 16"hg	3.9
Mini 2500S	25	600cfm @ 16"hg	5.3
Mini 3000S	30	720cfm @ 16"hg	6.3
Mini 4000S	40	860cfm @ 16"hg	5.4
Mini 5000S	50	1250cfm @ 16"hg	7.9
Mini 3000S	30	720cfm @ 16"hg	2.5
Mini 4000S	40	860cfm @ 16"hg	3.0
Mini 5000S	50	1250cfm @ 16"hg	4.4
Mini 7000S	75	1550cfm @ 16"hg	5.5



Stationary System shown with optional service platform

STANDARD & SPECIALTY TRAILER UNIT



Both the Multi-Vac Mini and Millennium Series can be trailer mounted and equipped with electric, LP gas or diesel vacuum pump drives. We also design & build special trailer units for your unique needs.



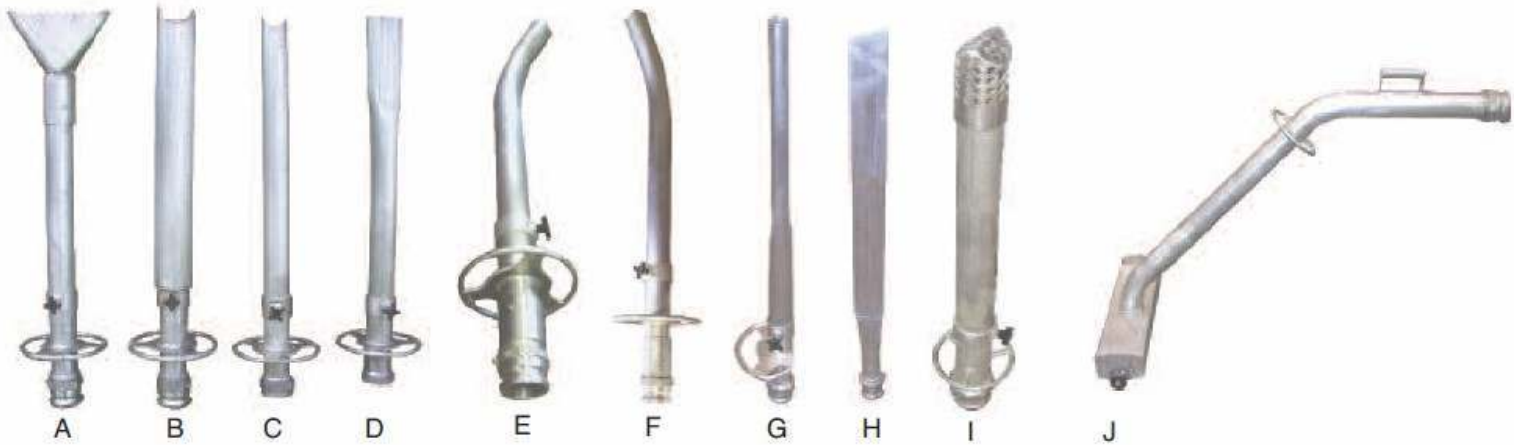
Standard Features

- See Mini and Millennium Multi-Vac Description for Unit Specifications
- Trailers can be retrofitted to any of our existing units.

Optional Features

- Hose Reel
- Nozzle Rack

ACCESSORIES



Nozzles - A variety of nozzles are available to handle an array of applications and materials

- A. Flared
- B. Bulk
- C. Round
- D. Flat
- E. 30° Round
- F. 30° Angle Long Round
- G. Flat Nozzle Half Handle
- H. Crevice Nozzle
- I. Round Nozzle with Size Restrictor
- J. Floor Nozzle with Wheels



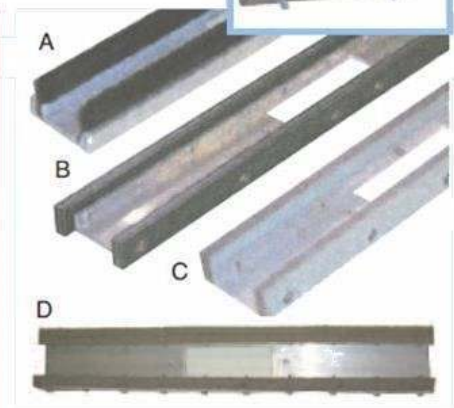
Brushes

- A. 6" Hand Brush
- B. 10" Hand Brush
- C. Round Brush
- D. Wall Brush



Rod

- A. Wall Rod
- B. Floor Rod



Adapters

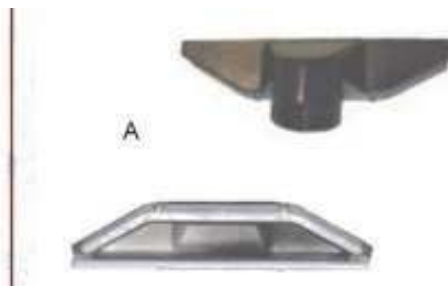
- A. 2" x 18" Brush
- B. 2" x 18" Squeegee
- C. 2" x 18" Fiber
- D. 2" x 18" Felt
- E. Master Nozzle

Note: All adapters require Master Nozzle for mounting



Pipe Cleaning Tools

- A. 4" - 6" Pipe Cleaning Tools
- B. 6" & Larger Pipe Cleaning Tools



Gulper Tools

- A. 2" x 12" Wide Mouth Gulper Tool



Bulk Pickup Tool w/ Breather

ACCESSORIES



Self-Contained Units

When electrical power is not available, Multi-Vac Units can be equipped with LP Gas or Diesel engines with air compressor options.



Hose and Couplings

A completed range of hoses and couplings are available from 2" to 10" diameter.



Custom Shovel Tool

Used to shovel gravel, ore or rock into vacuum hose. Features large diameter wheels and operator handle.



Lift Bale

Lift Bales are available for all Mini and Millennium Series Units. The framework of both Series are designed to be lifted.



Hoppers

Add additional hoppers to increase operation uptime. Fork-lift Truck Portable 750 Litre and 1500 Litre models



Cartridges

Upon request, cartridge filters available for special applications.

Other Optional Features

- Explosion Proof Electrics
- Liquids Handling Probe
- HEPA Filters
- Power Cord Reel
- Trailer can be retrofitted to any of our existing units
- Interceptor Hoppers

Custom Units

Add additional hoppers to increase operation uptime. Fork-lift Truck Portable 750 Litre and 1500 Litre models

Warranty

By using conservative design standards with all our components we have produced a machine which will have a superior operating life span and require minimum maintenance. Consequently a 2 year warranty is furnished with all Multi-Vac systems.

Experienced In Many Applications

Industries Served

- Brick Manufacturer
- Foundry
- Steel Manufacturer
- Lime Manufacturer
- Nickel Mine
- Tire Manufacturer
- Chemical Manufacturer
- Bakery
- Abrasive Manufacturer
- Copper Mine
- Cement Manufacturer
- Lead Smelter
- Charcoal Manufacturer
- Power Plant
- Chip Board Manufacturer
- Engine Manufacturer
- Insulation Manufacturer
- ReFactory Manufacturer

Materials Handled

- Abrasives
- Alumina
- Aluminum Scrap
- Asbestos
- Ash
- Bark
- Brick
- Carbon Black
- Catalysts
- Cement
- Ceramic Particles
- Cereals
- Chemicals
- Clay
- Clinker
- Coal
- Cullet
- Dust
- Fertilizer
- Flour
- Grains
- Lead Oxide
- Limestone
- Liquids
- Metal Chips
- Mill Scale
- Mineral Wool
- Ore Pellets
- Oxides
- Paper
- Plastic Pellets
- Refractories
- Rocks
- Sand
- Sawdust
- Shot and Grit
- Slag
- Slurries
- Vermiculite
- Wood Chips

Applications

- All Process Pneumatic Vacuum/Pressure Systems
- General Plant Cleanup
- Material Recovery
- Bin Loading/Unloading
- Central Manifold Systems
- Scaling/Batching
- Spills
- Bulk Loading/Unloading
- Pharmaceutical
- Machining & Milling
- Belt Loading
- Belt Spillage Cleanup
- Dump Truck Loading
- Roof Pea Gravel Removal
- Hazard Cleanup
- Water & Slurry Removal & Recycling
- Low Headroom Mining
- High-Temperature Materials
- Special Engineered Applications
- Plus many more